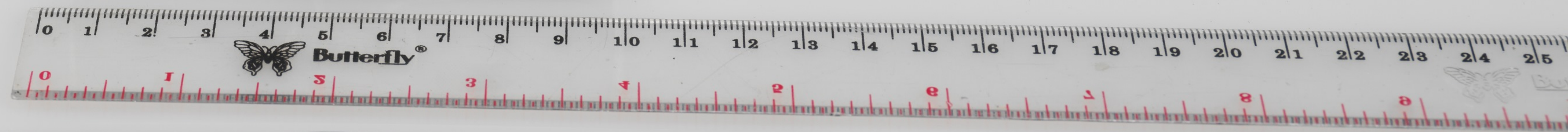
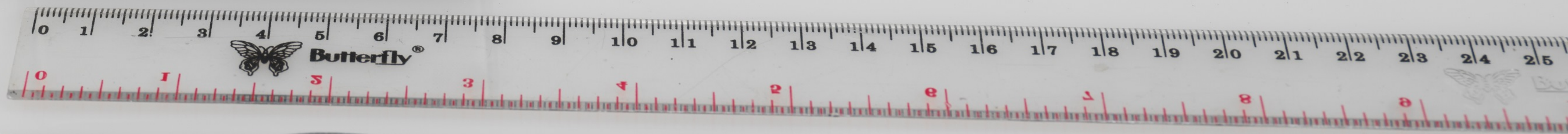


PERPUSTAKAAN NASIONAL
REPUBLIK INDONESIA



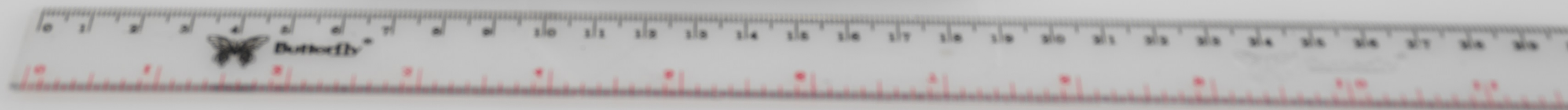




Bib. Id : 006-3750490
Mem. Id : 07091253-29

D 58

Handwritten text on a piece of aged paper attached to the book cover.





Bib. Id : 006-5254960
Item. Id : 07091255 29

D 58



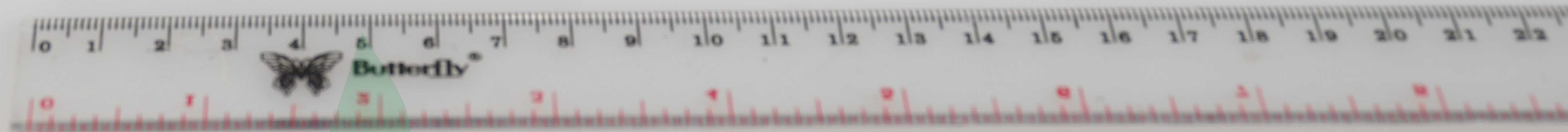
Opus 111

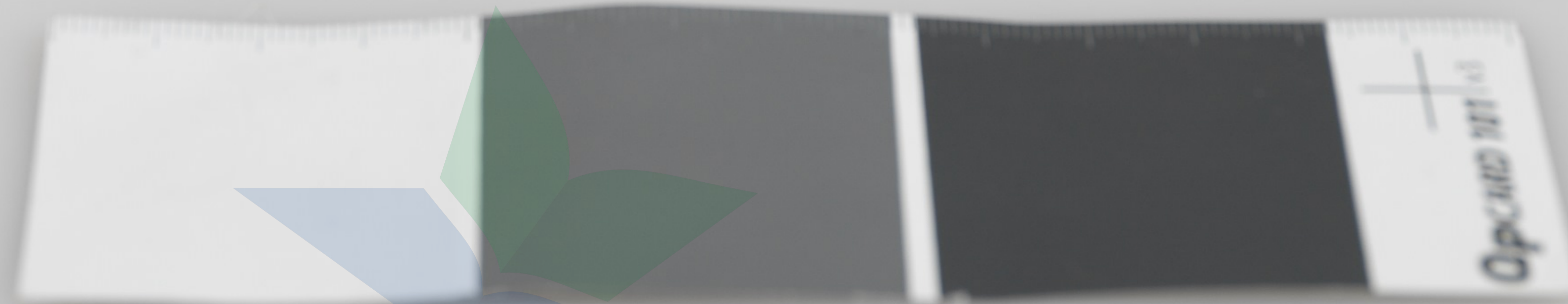


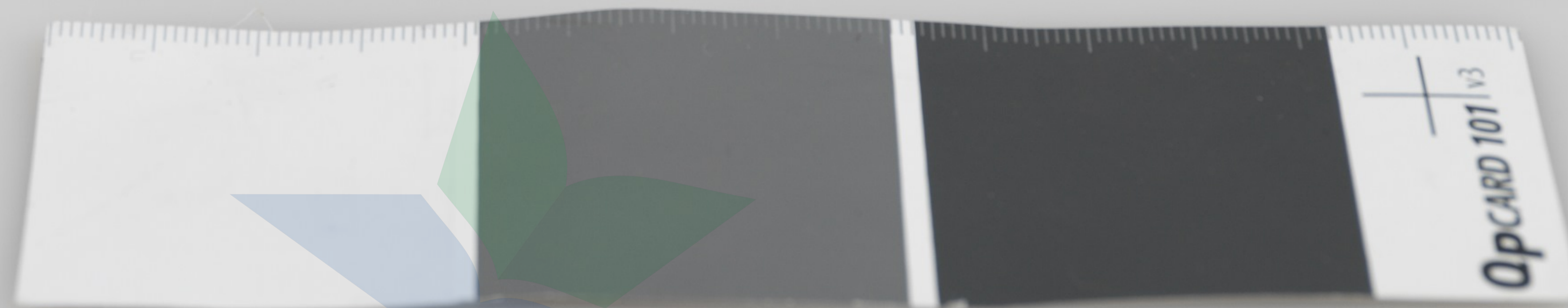


D 58

D 58 Gordon
jaitep...
M... ..



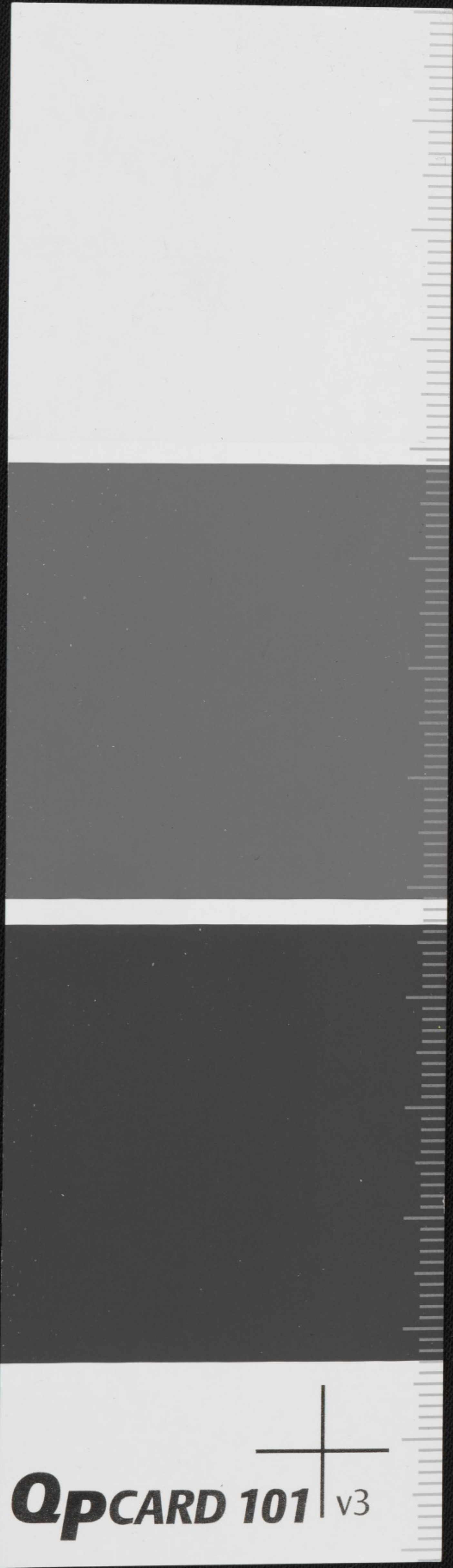




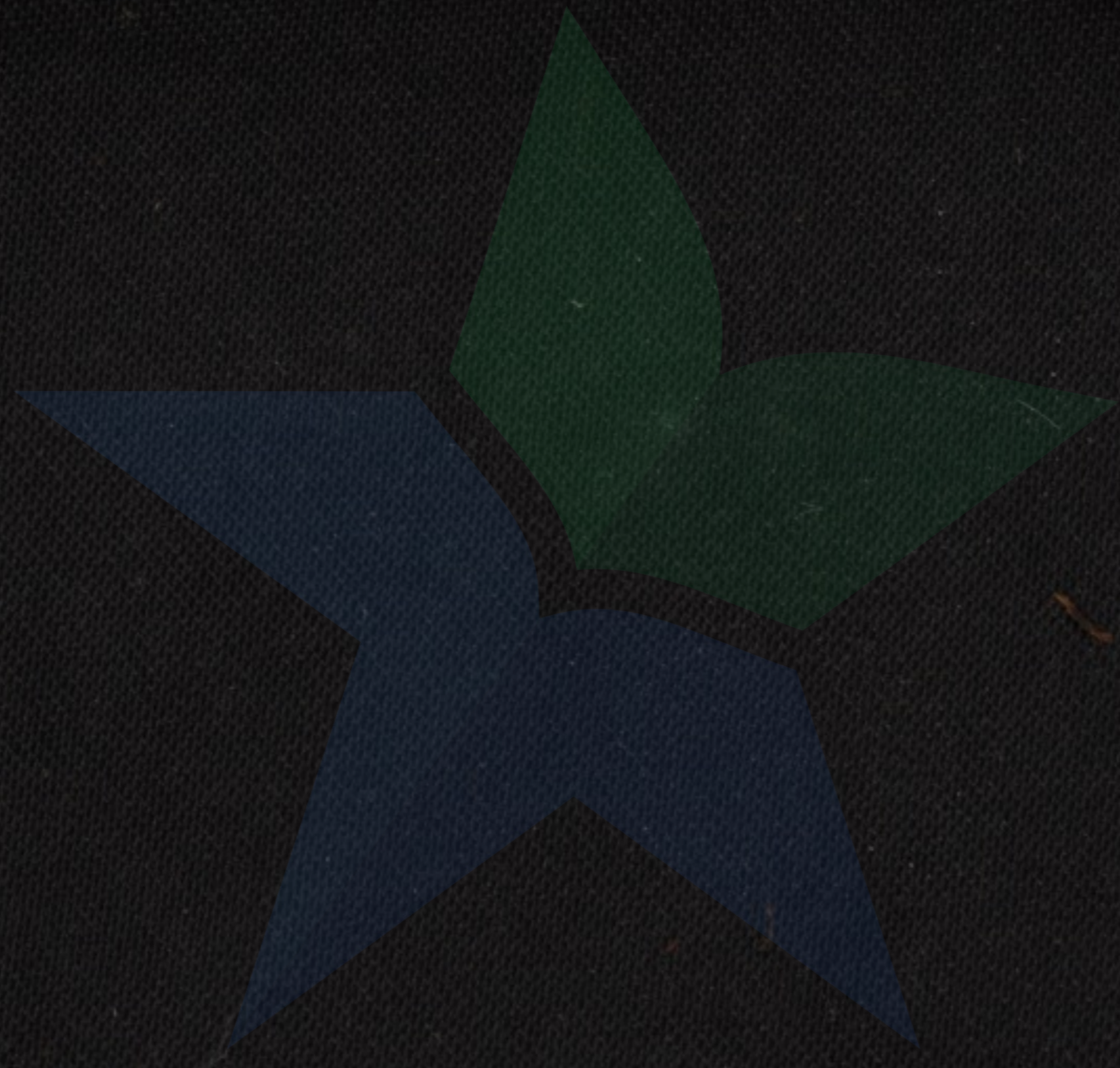


D 58

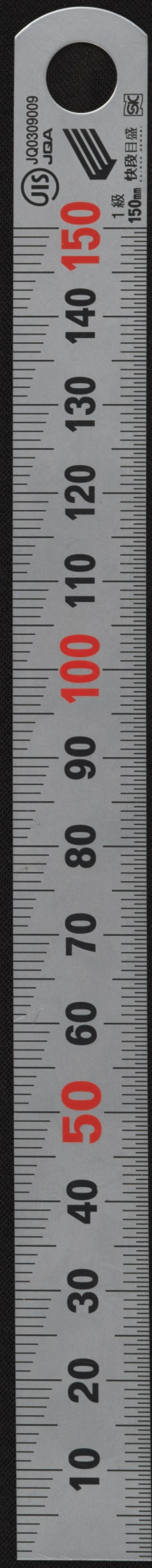


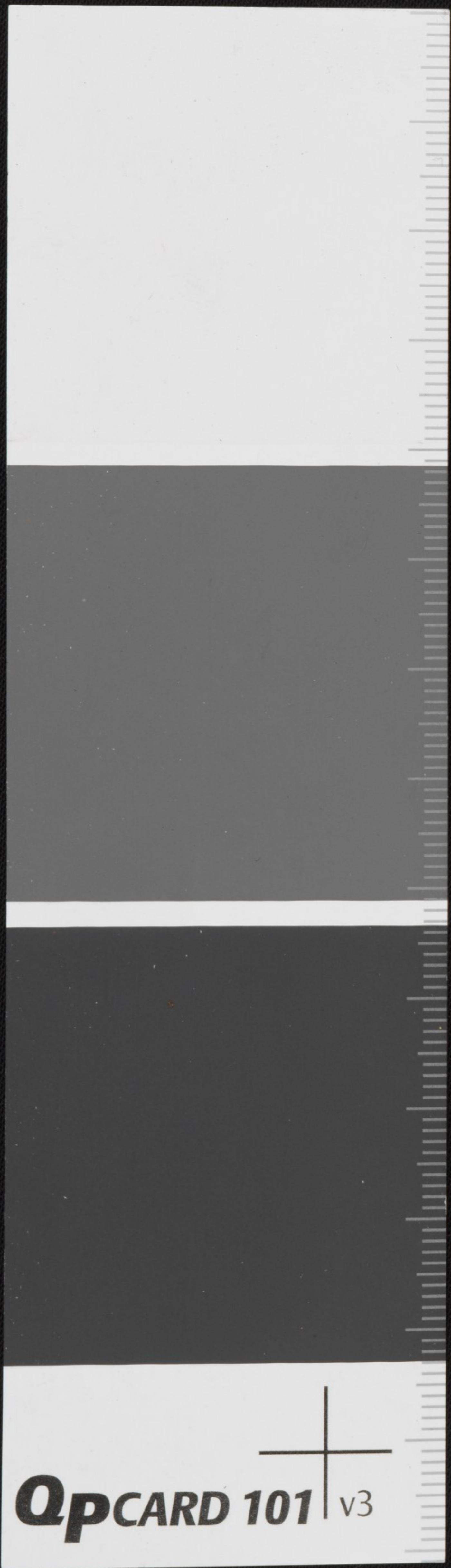


Handwritten text on palm-leaf manuscript strips, arranged in two columns. The script is an ancient form of the Indonesian alphabet, likely Paku script. The text is written in black ink on the natural brown color of the dried palm leaves. The strips are bound together, with a dark, worn cover visible at the top.



Handwritten text in an ancient script, likely Balinese, on a palm leaf manuscript. The text is arranged in approximately 15 horizontal lines across the length of the leaf. The characters are dark and clearly etched into the light-colored wood of the leaf. The script appears to be a form of the Balinese alphabet, possibly used for religious or administrative purposes.



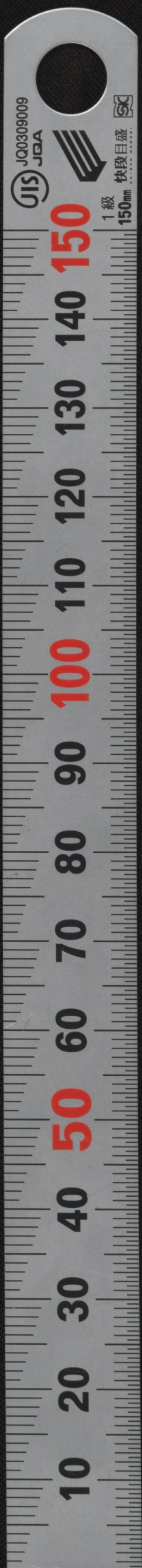


Handwritten text on a palm leaf manuscript, consisting of two columns of approximately 15 lines each. The script is a form of Indonesian script, likely Balinese or Javanese, written in black ink on a brown, textured leaf.



QpCARD 101 v3

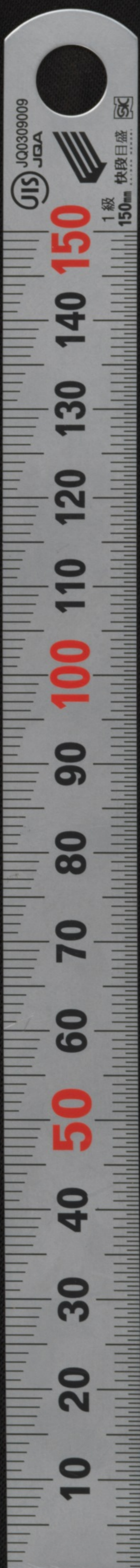
Handwritten text on a palm leaf manuscript, consisting of approximately 20 lines of script in an ancient Indonesian language, likely Balinese or Javanese. The text is arranged in two columns, with a central binding visible. The script is dark and appears to be a form of Kawi or similar historical script.



PERPUSTAKAAN NASIONAL
REPUBLIK INDONESIA

QpCARD 101 v3

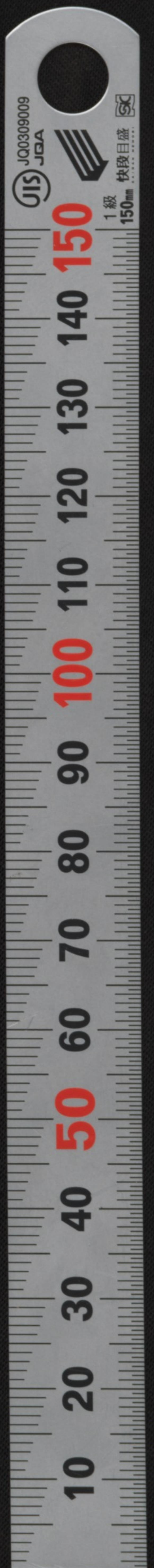
Handwritten text on palm-leaf manuscripts, arranged in two columns. The script is an ancient form of the Indonesian alphabet, likely Paku script. The text is written in black ink on aged, brown palm-leaf strips. The top half of the image shows the upper portion of the manuscripts, and the bottom half shows the lower portion. The text is organized into lines, with some characters appearing to be grouped or separated by small symbols.



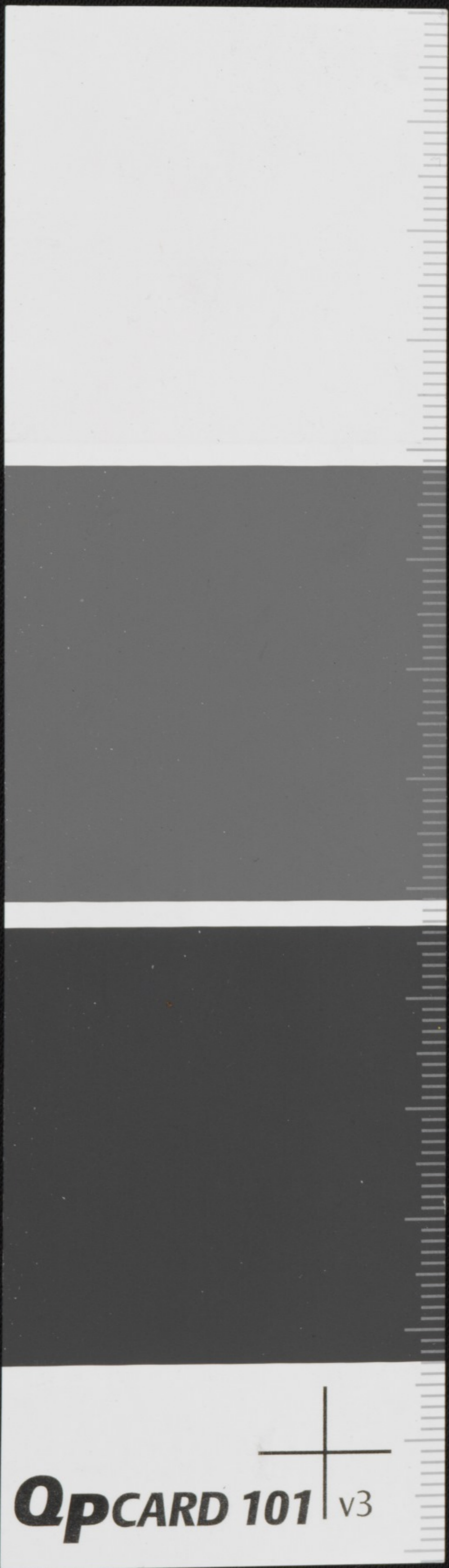
PERPUSTAKAAN NASIONAL
REPUBLIK INDONESIA

QpCARD 101 v3

Handwritten text on palm-leaf manuscript, arranged in two columns. The script is an ancient form of the Indonesian alphabet, likely Paku script. The text is written in black ink on a brown, weathered leaf surface. The characters are small and closely spaced, with some larger characters that may represent specific symbols or punctuation. The manuscript is bound in the center, and the text is organized into approximately 15 lines on each side of the fold.



PERPUSTAKAAN NASIONAL
REPUBLIK INDONESIA



Handwritten text on two palm-leaf manuscripts. The text is written in a dark ink, likely a form of Southeast Asian script, and is arranged in approximately 15 horizontal lines across both leaves. The characters are somewhat stylized and difficult to decipher without a specific key.



Handwritten text on the top section of a palm-leaf manuscript, consisting of approximately 10 lines of characters.

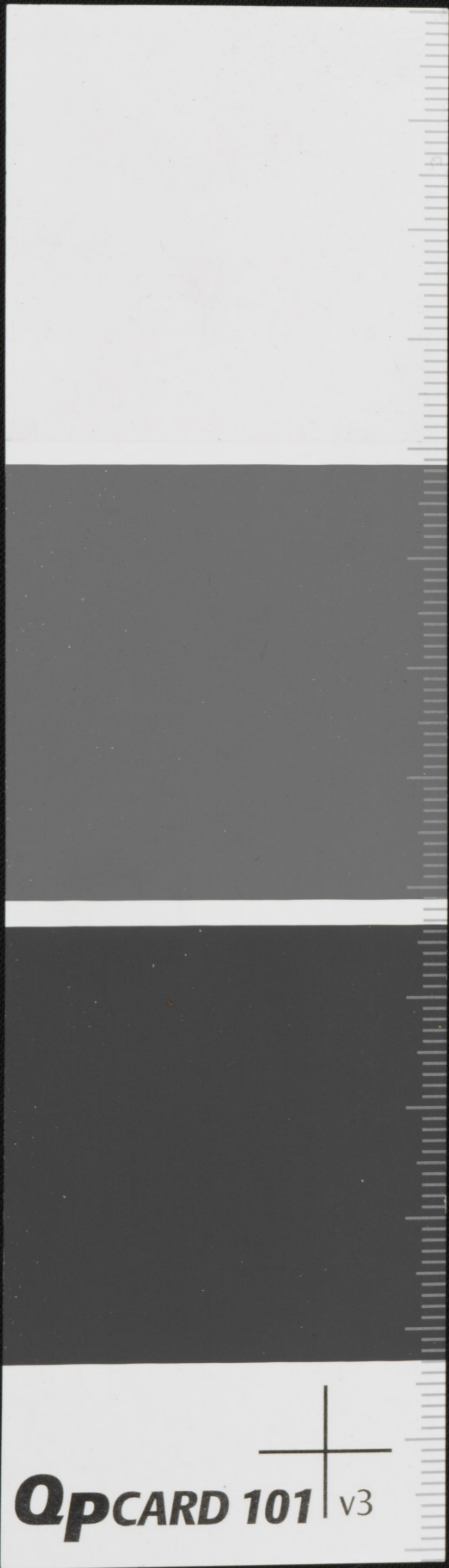
Handwritten text on the second section of the palm-leaf manuscript, consisting of approximately 10 lines of characters.

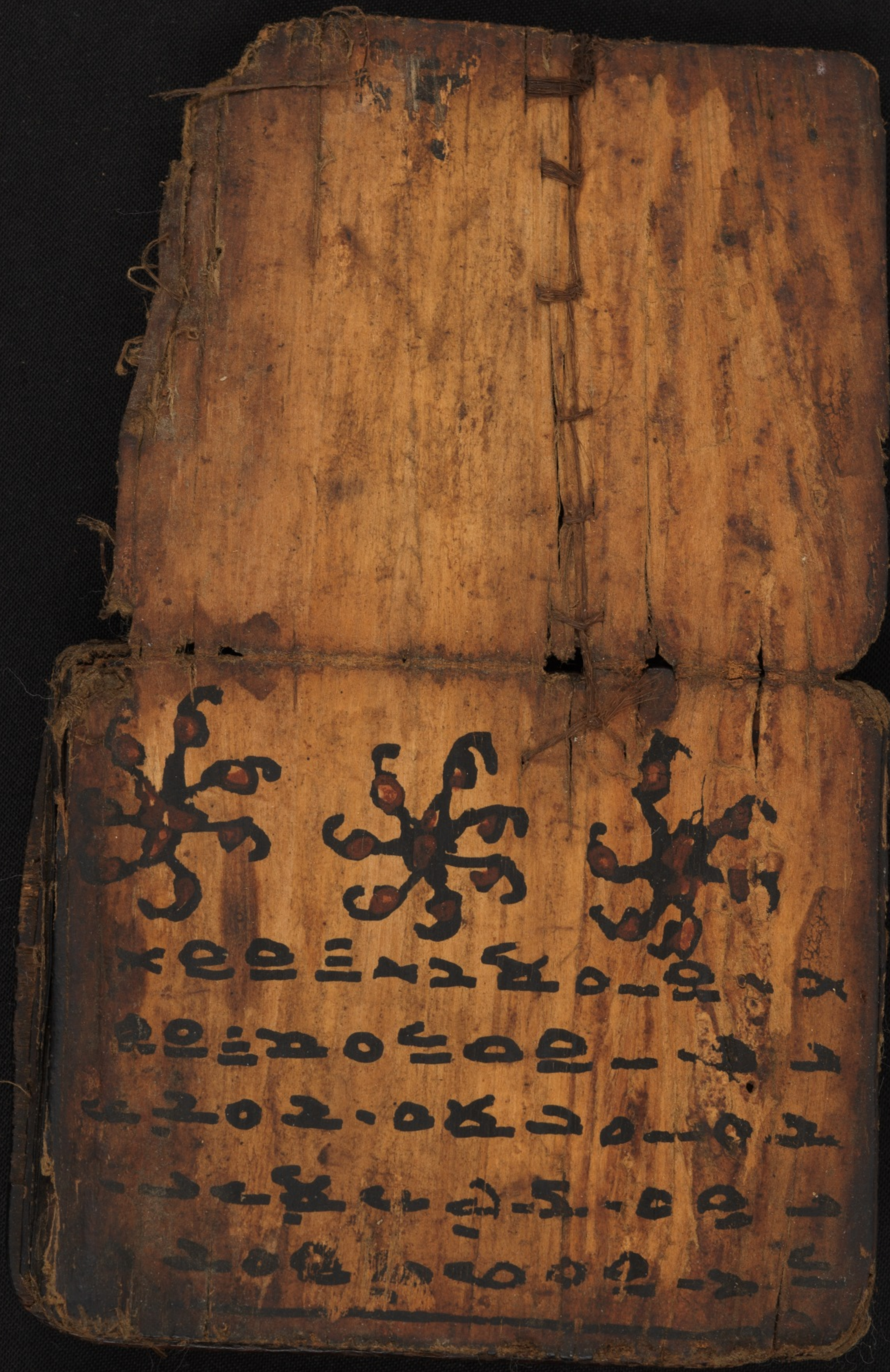
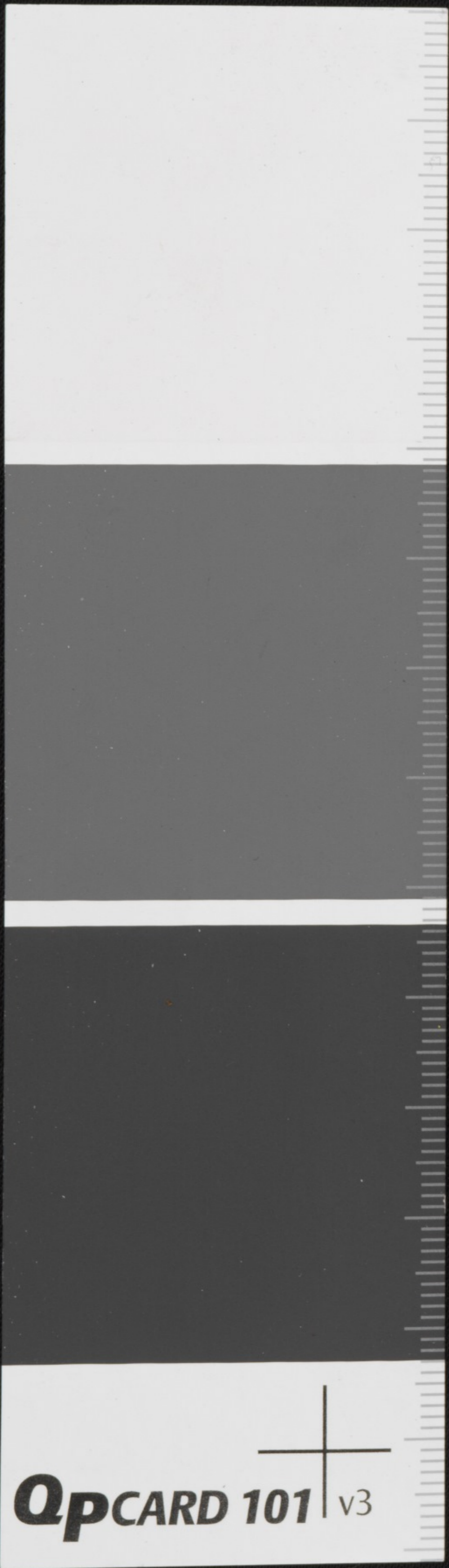
Handwritten text on the third section of the palm-leaf manuscript, consisting of approximately 10 lines of characters.

Handwritten text on the bottom section of the palm-leaf manuscript, including a decorative floral illustration and a signature.



QpCARD 101 v3





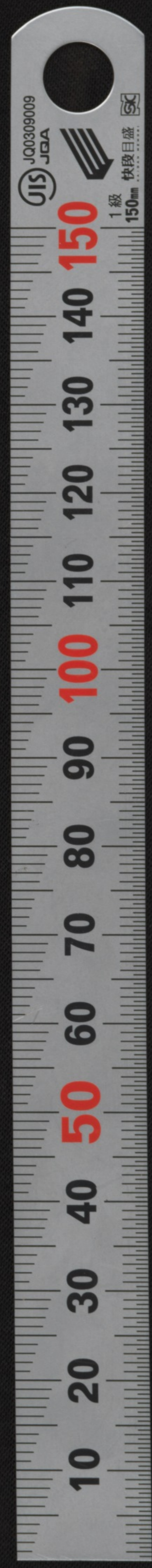
PERPUSTAKAAN NASIONAL
REPUBLIK INDONESIA

QPCARD 101 v3

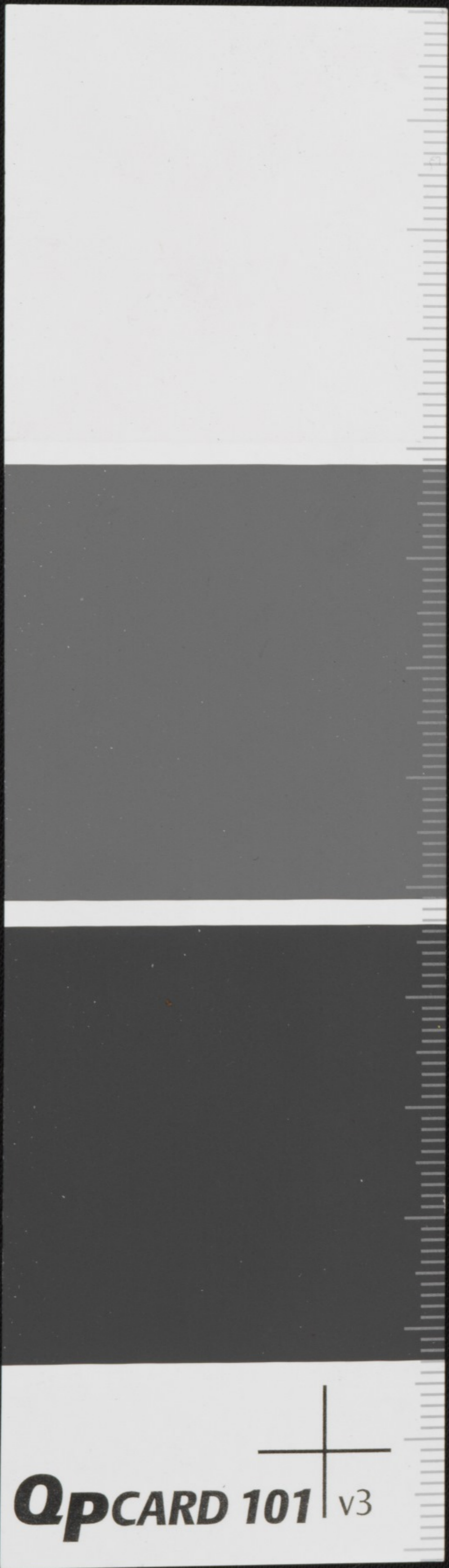


QPCARD 101 v3

Handwritten text on a palm leaf manuscript, consisting of approximately 18 lines of script. The characters are dark and appear to be from an ancient Southeast Asian script, possibly Balinese or Javanese. The leaf is folded in the middle, and the text is written on both the inner and outer surfaces of the leaf segments.



PERPUSTAKAAN NASIONAL
REPUBLIK INDONESIA



Handwritten text on palm-leaf manuscript strips, arranged in two columns. The script is an ancient form of the Indonesian alphabet, likely Paku script. The text is written in black ink on aged, yellowish-brown leaves. There are several decorative symbols interspersed within the lines of text, including a prominent diamond-shaped symbol with a central dot.



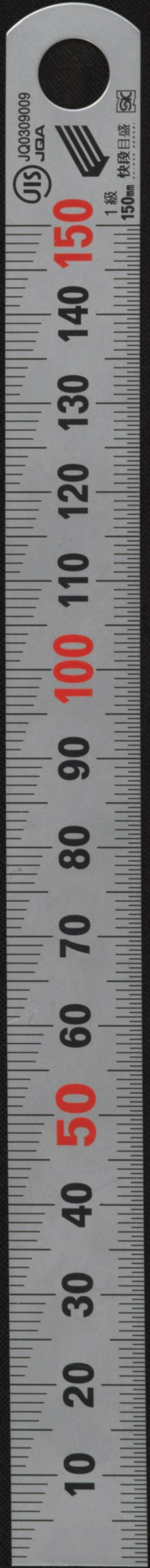
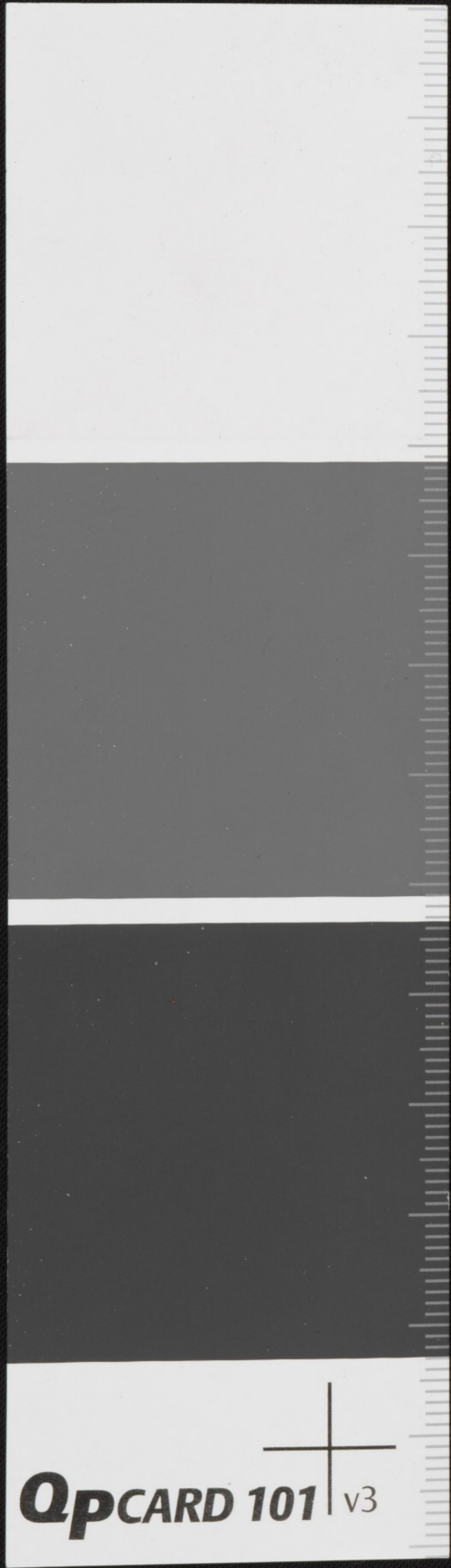
QPCARD 101 v3

Handwritten text on palm-leaf manuscripts, arranged in two columns. The script is an ancient form of the Indonesian alphabet, likely Paku script. The text is written in black ink on aged, brown palm leaves. The characters are small and densely packed, with some decorative elements interspersed.

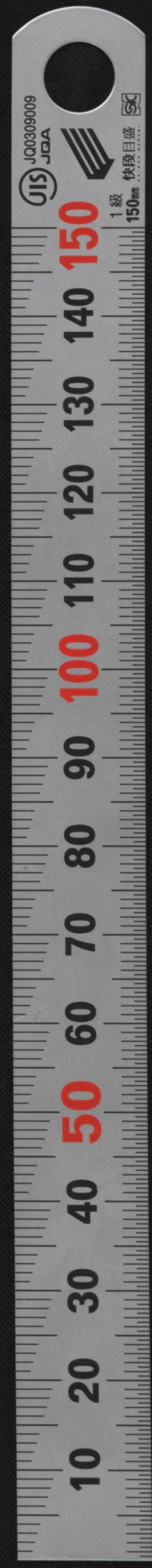
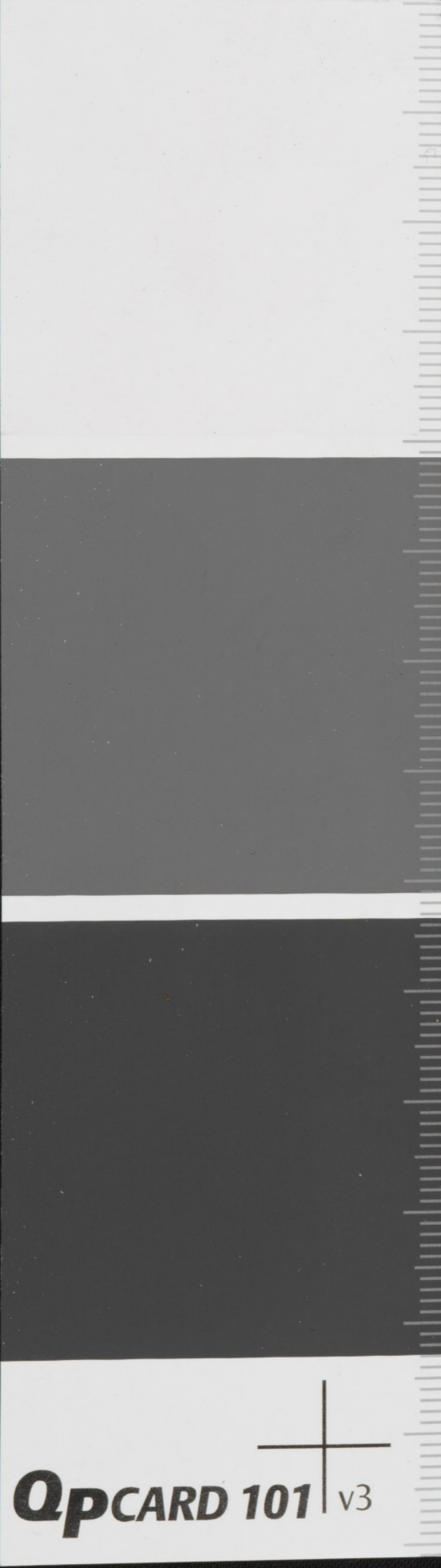


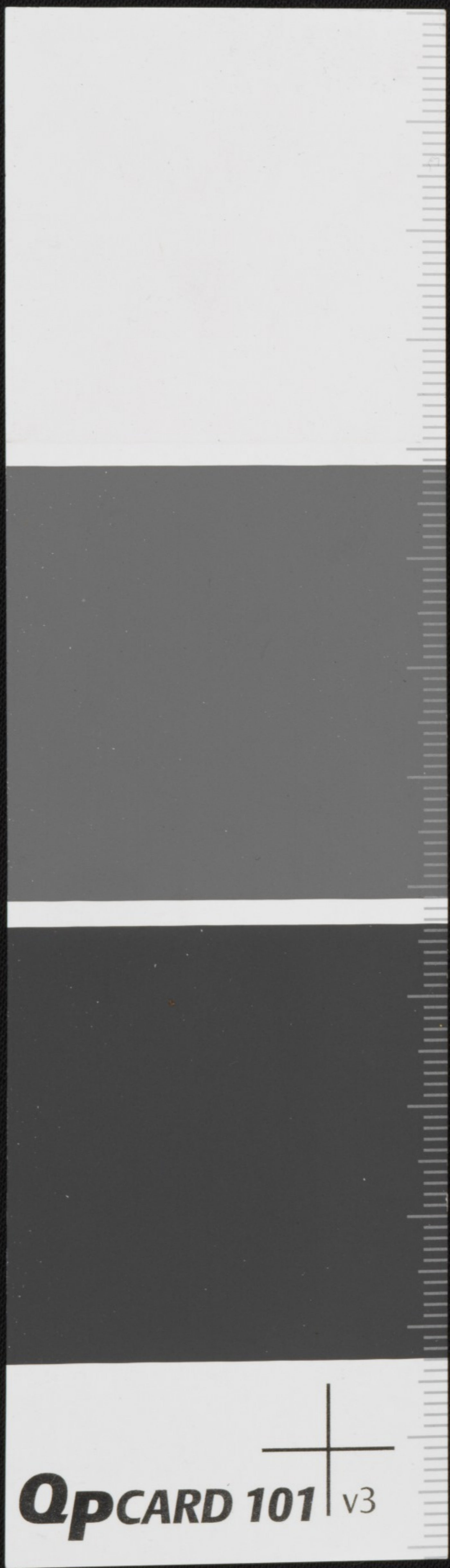
PERPUSTAKAAN NASIONAL
REPUBLIK INDONESIA

Handwritten text in an ancient script, likely Balinese, on palm-leaf manuscripts. The text is arranged in approximately 12 horizontal lines across the length of the leaf. The characters are dark and clearly etched into the light-colored wood.

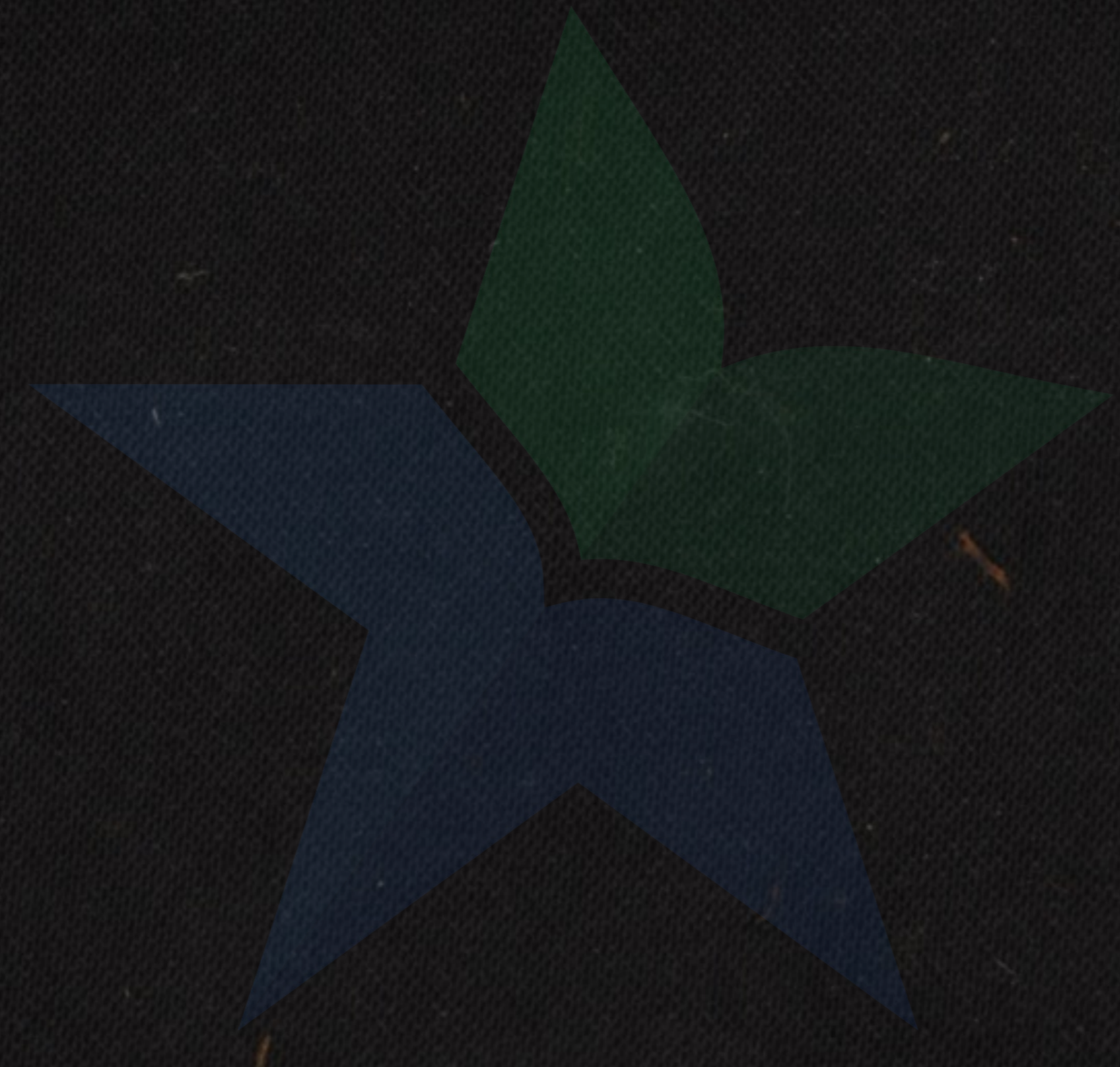
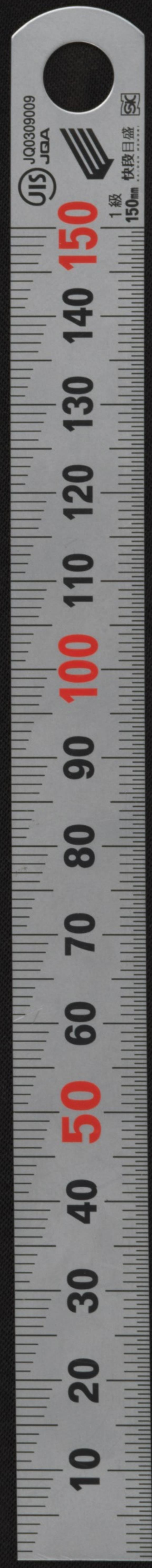


Handwritten text in an ancient script, likely Balinese, on palm-leaf manuscript strips. The text is arranged in approximately 15 horizontal lines across the length of the strip. Some lines contain decorative symbols or characters that may represent specific characters or punctuation in the script.

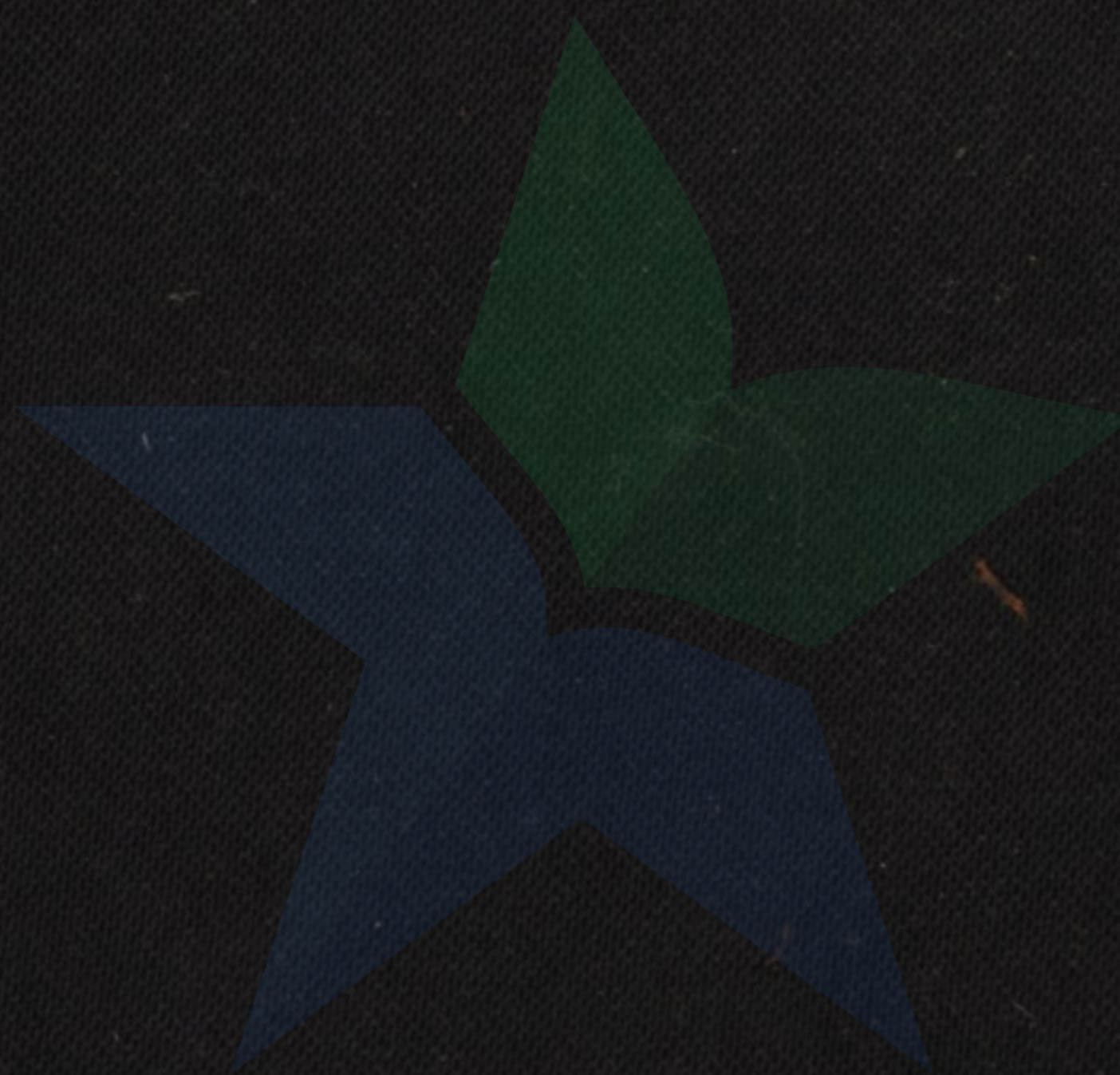
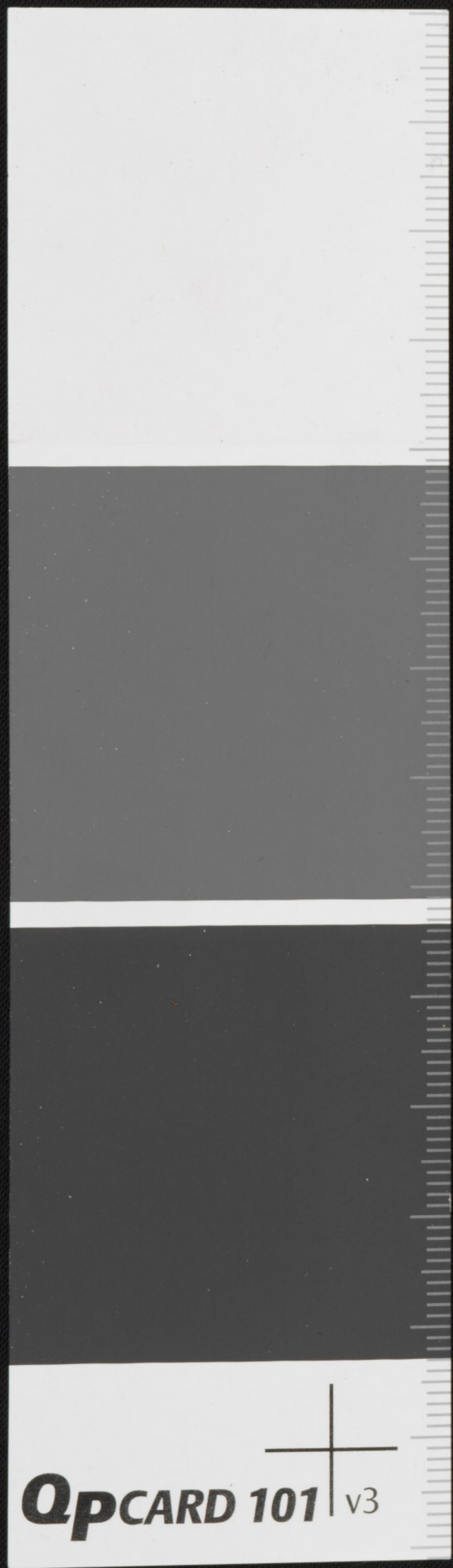




Handwritten text in an ancient script, likely Tamil, on a palm leaf manuscript. The text is arranged in approximately 10 horizontal lines across the leaf. A decorative red and black motif is visible in the center of the leaf.



PERPUSTAKAAN NASIONAL
REPUBLIK INDONESIA



PERPUSTAKAAN NASIONAL
REPUBLIK INDONESIA